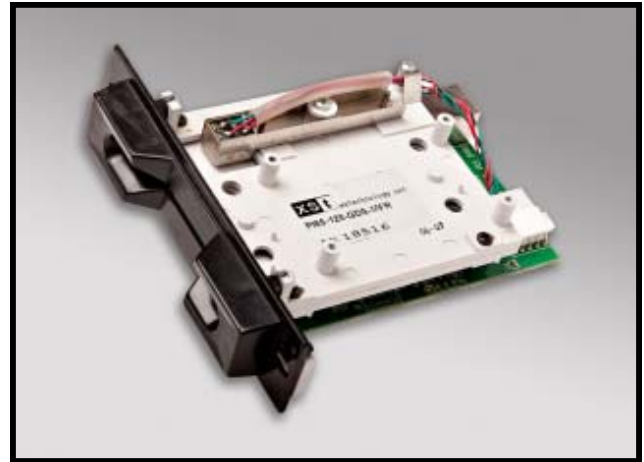


**Partial Insertion Magstripe Reader****Features**

- GDS Communication Protocol
- USB HID 1.0 / 2.0 12Mb/s interface
- StatGuard™ static protection
- Front and rear card detects
- Reads multiple tracks
- Open slot architecture
- Slot illumination
- Lifetime head warranty available

**Model PI 65-120-GDS with XS1010 bezel****Specifications**

Interface:	USB HID 1.0 / 2.0 high speed 12Mb/s
Read Direction:	Insertion and/or withdrawal
Tracks:	65% of both ISO tracks 1 and 2
Read Speed:	3ips - 45ips
Card Thickness:	10mils - 45mils
Connector:	Series 'B' receptical
Dimensions:	Length: 3.5in. Width: 4.0in. Height: 1.4in. approx.
MTBF:	Electronics: 100,000 hours Head Life: 500,000 minimum
Environment:	Operating Temp.: 0°C - 50°C Storage Temp.: -20°C - 70°C Operating Humidity: 8%-95% Storage Humidity: 5% -95%

**Bezel Selection****XS1010-00****XS1010-09****XS1025-00**

√ custom bezels and colors available

## Model PI65-120-GDS

Series PI65-120-GDS is a partial insertion magnetic stripe card reader designed specifically for the gaming industry. The reader supports the Gaming Standards Association's [GDS Card Reader Communication Protocol v1.0.4](#). The unit reads up to two tracks of F2/F encoded data. Data can be read on insertion, withdrawal, or both. Mechanical front and rear card detects are standard. Direct optical front and rear card detects are available as an option. All XS Technology card readers are backed by a one-year warranty.

## Unique Features

The reader uses an [inventive ball and optical combination for front and rear card detects](#) (option). This feature allows the reader to operate normally when translucent cards are used. Punched cards are impossible to snag.

The reader's [card slot is illuminated](#) with super bright leds for easy identification in dimly lit locations such as casinos, arcades, bars, and night clubs. The reader's leds can be flashed on and off to alert the cardholder.

[Antistatic features](#) are used to insure the uninterrupted operation of the reader in environments where static discharge can be problematic.

[Open back architecture](#) allows for coins and other unwanted items to easily be pushed out the rear of the unit.

## Pin Assignment

Pin No.	USB
1	V <sub>Bus</sub>
2	D-
3	D+
4	GND
Shell	Shield

## Power Requirements

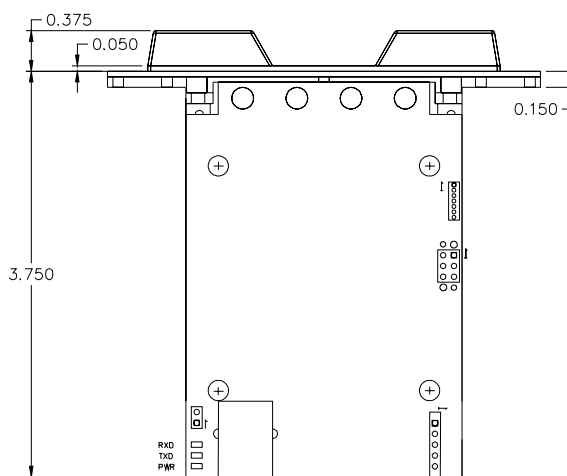
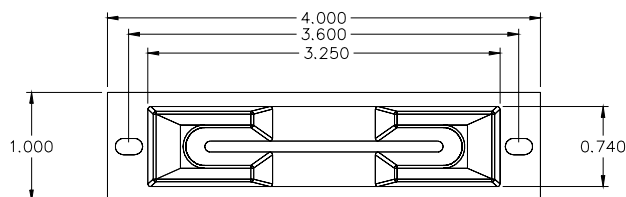
Voltage:	4.35 - 5.25V
Current	
Reader:	Suspend 200uA max.
Lamp:	40mA typ.

## Status LEDs

- PWR - Reader is activated
- RXD - Receiving host commands
- TXD - Transferring data

## Dimensions

Bezel XS1010



PI Reader Module