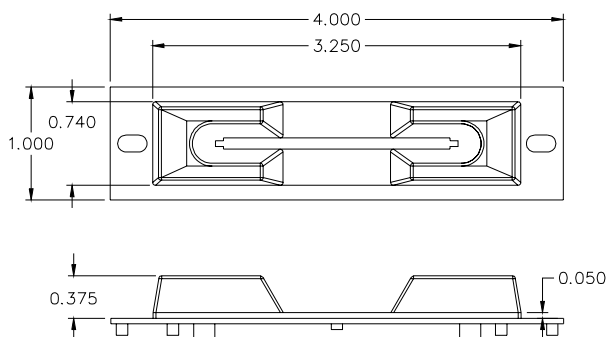
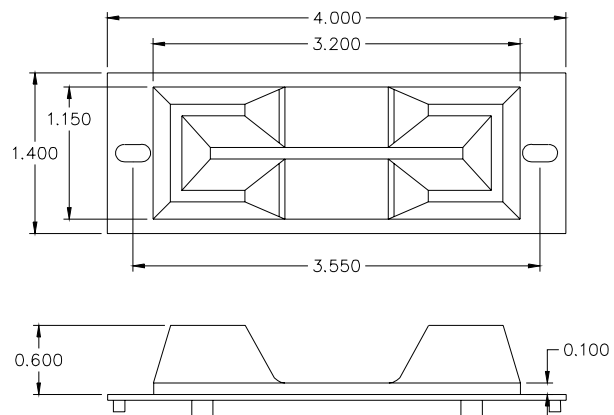


Partial Insertion Magstripe Reader**Features**

- Bit/Strobe interface
- StatGuard™ static protection
- Front and rear card detects
- Open slot architecture
- Reads ISO track1 or track2
- Easily serviceable
- One year warranty

**Model PI 65-020-BST with XS1010 bezel****Specifications**

Interface:	Bit/Strobe
Read Direction:	Insertion and/or withdrawal
Tracks:	65% of ISO Track 1 (100) or Track 2 (020)
Read Speed:	3ips - 45ips
Card Thickness:	10mils - 45mils
Connector:	1 x 7 7 pin or 2x7 14 pin
Dimensions:	Length: 3.5in. Width: 4.0in. Height: 1.4in. approx.
MTBF:	Electronics: 100,000 hours Head Life: 500,000 minimum
Environment:	Operating Temp.: 0°C - 50°C Storage Temp.: -20°C - 70°C Operating Humidity: 8%-95% Storage Humidity: 5% -95%

Bezel Selection**XS10410 STANDARD****XS1025**

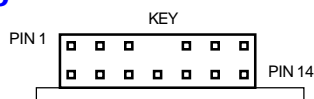
√ custom bezels and colors available

Model PI65-100/020-BST

Model PI65-100/020-BST is a partial insertion card reader with a bit/strobe interface designed as a replacement card reader for use in player tracking systems. Antistatic features are used to insure the uninterrupted operation of the reader in casino environments, where static discharge can be problematic. The reader uses an inventive ball and optical combination for front and rear card detects that insure the card glides unhindered over the card detects. Punched cards are impossible to snag. The reader is comes with XS Technology's standard one year warranty.

Pin Assignment

2x7 14 pin

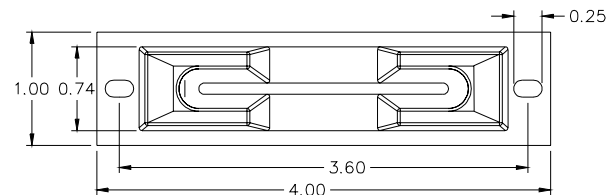


PIN	SIGNAL	
1	-DATA	Data bit Lo = Logic 1
2	(NC)	
3	-CLK	Clock LO data valid
4	(NC)	
5	-FCD	Front card detect
6	(NC)	
7	-RCD	Rear card detec
8	[KEY]	
9	+5V	
10	GND	
11	(NC)	
12	(NC)	
13	-DP	Data present
14	(NC)	

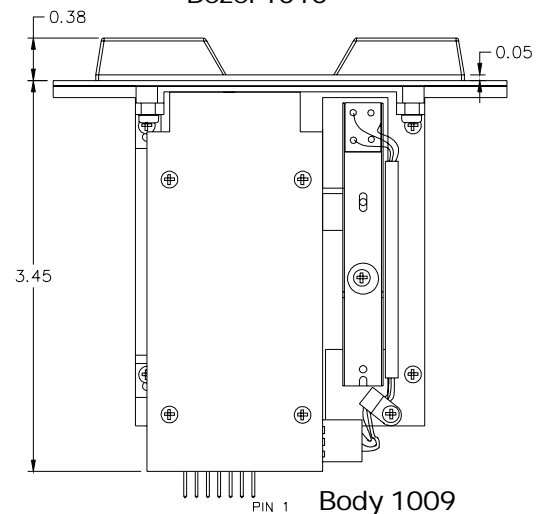
Power Requirements

Voltage:	5.5V DC max. 3.0V DC min.
Current	
Reader:	30mA @ 5.0V DC 15mA @ 3.0V DC

Dimensions



Bezel 1010



Body 1009

Timing Diagram

- A 1us Min.
- B 1us
- C 12us
- D 18.4 to 36ms
- E Bit Cell Length

